

AERODROME GROUND
MOVEMENT CHART - ICAO

APRON ELEV 6 m

TWR	118.2(E)	118.8(W)
GND	121.75(E)	121.7(W)
APRON	121.65	122.175
	121.8	123.325

SEOUL / Incheon Intl
RWY 15L/R, 33L/R DEPARTURE

ELEVATIONS AND DIMENSION IN METERS
BEARINGS ARE MAGNETIC



ANNUAL RATE OF CHANGE
6' W

LEGEND	
WNG 112.9	VOR CHECK-POINT AND FREQUENCY
• • •	Stop-bar light
54R	Holding position
R4	Taxi lane
50	Gate
301	Remote stand
→	Taxi routes
→	De-icing pad taxi routes
3	Powered taxi-start point
1E	Transfer of control point(TCP)
Open Channel	
Hot Spot	
ATC service boundary (Maneuvering Area)	
RPBB (Remote Passenger Boarding Bridge)	

Note
All aeroplane will taxi at speeds of more than 10 kt on Taxiways A, B, C, D, M, N or P to ensure smooth traffic flow unless there is exceptional direction concerning safety factors by ATC. And if it is impracticable, pilots shall notify to ATC.



HS 1	AIRCRAFT TAXIING ON TAXIWAY J FROM RUNWAY 15L AFTER LANDING USE CAUTION WHEN ATC UTILIZES RUNWAY 15R FOR TAKEOFFS. DO NOT CROSS THE HOLDING MARKING FOR RUNWAY 15R WITHOUT ATC AUTHORIZATION.
HS 2	AIRCRAFT TAXIING ON TAXIWAY K FROM RUNWAY 33R AFTER LANDING USE CAUTION WHEN ATC UTILIZES RUNWAY 33L FOR TAKEOFFS. DO NOT CROSS THE HOLDING MARKING FOR RUNWAY 33L WITHOUT ATC AUTHORIZATION.
HS 21 ~ 24, 29	USE CAUTION OF CONFUSION ON TAXIWAYS. DO NOT PROCEED TAXIING BEYOND TRANSFER OF CONTROL POINTS WITHOUT CLEARANCE FROM INCHEON APRON OR GROUND(TOWER).
HS 25 ~ 28	USE CAUTION OF CONFUSION ON TAXIWAYS.

Note 1
When non-standard taxi routes are applicable, Incheon APRON will issue transition taxi instructions one to another taxilane in APRON 2, APRON 3, APRON 4 and Cargo APRONS.

Note 2
Aircraft shall not taxi into maneuvering area without clearance from Incheon Tower or Ground.

		SURFACE	WIDTH	STRENGTH
APRON	Apron 1, 2 Cargo Apron 1 Maintenance Apron	Concrete	-	PCN 86/R/B/X/T
	Apron 3, 4 Cargo Apron 2			PCN 85/R/B/X/T
TWY A, D		Concrete	30 m Shoulder : 15 m - Paved : 12 m - Turfed : 3 m	PCN 86/R/B/X/T
TWY B, C		Asphalt		PCN 88/F/B/X/T
TWY M		Concrete	30 m Shoulder : 15 m - Paved : 15 m	PCN 85/R/B/X/T
TWY N		Asphalt		PCN 75/F/B/X/T
TWY P		Asphalt		PCN 75/F/B/X/T

Taxiway edge lights on all taxiways curve area
Taxiway center line lights on all taxiways
PAX Terminal and Concourse A VDGS equipped

Change : Information of taxilane, ACFT stands, TCP, stop-bar lights, intermediate holding position lights, and de-icing pad marking.

OFFICE OF CIVIL AVIATION

AIRAC AIP AMDT 11/22
Effective : 1600UTC 30 NOV 2022

AERODROME GROUND
MOVEMENT CHART - ICAO

APRON ELEV 6 m

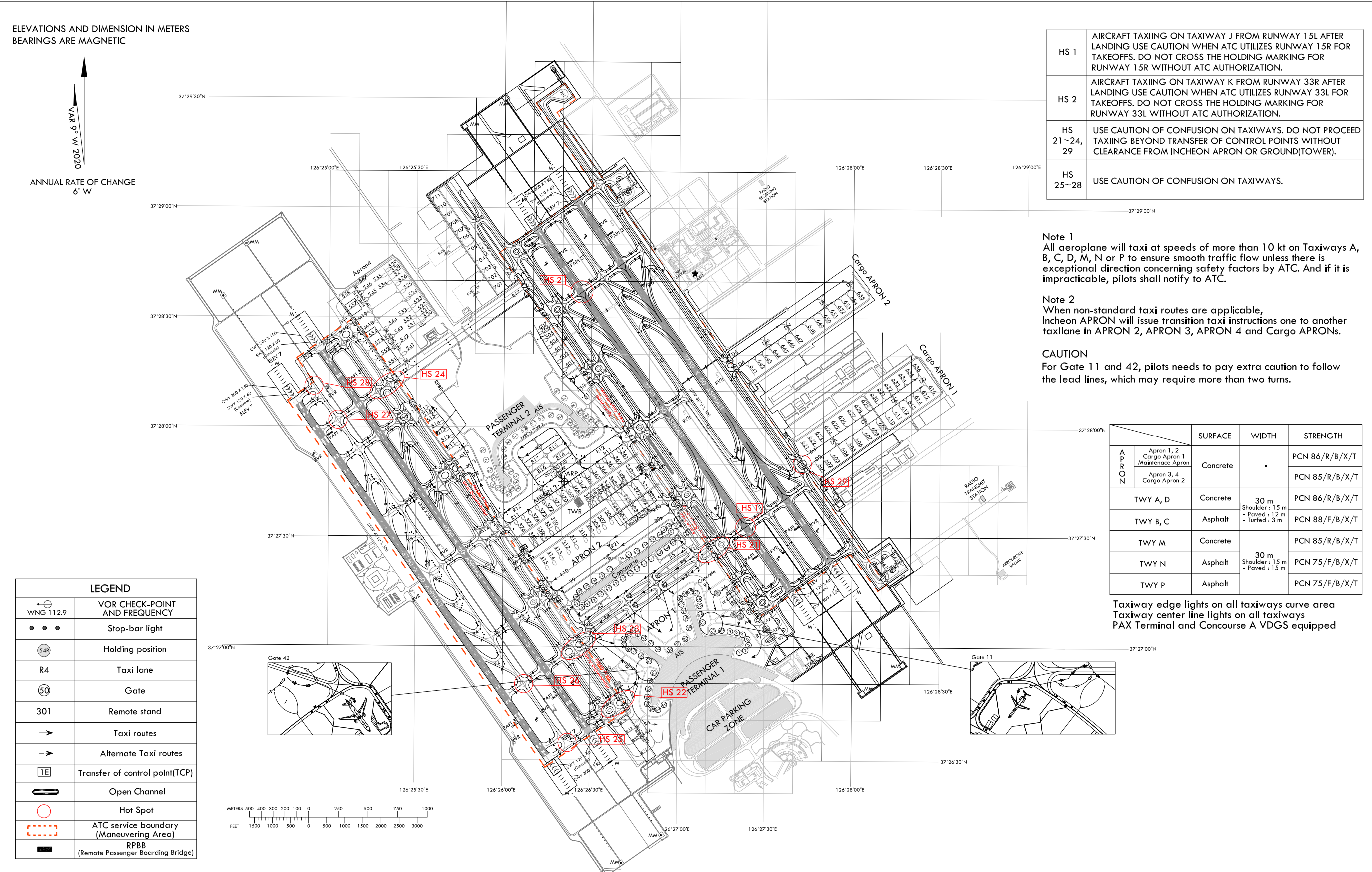
TWR	118.2(E)	118.8(W)
GND	121.75(E)	121.7(W)
APRON	121.65	122.175
	121.8	123.325

RKSI AD CHART 2 - 7
20 OCT 2022
SEOUL / Incheon Intl
RWY 15L/R, 33L/R ARRIVAL

ELEVATIONS AND DIMENSION IN METERS
BEARINGS ARE MAGNETIC



ANNUAL RATE OF CHANGE
6' W



HS 1	AIRCRAFT TAXIING ON TAXIWAY J FROM RUNWAY 15L AFTER LANDING USE CAUTION WHEN ATC UTILIZES RUNWAY 15R FOR TAKEOFFS. DO NOT CROSS THE HOLDING MARKING FOR RUNWAY 15R WITHOUT ATC AUTHORIZATION.
HS 2	AIRCRAFT TAXIING ON TAXIWAY K FROM RUNWAY 33R AFTER LANDING USE CAUTION WHEN ATC UTILIZES RUNWAY 33L FOR TAKEOFFS. DO NOT CROSS THE HOLDING MARKING FOR RUNWAY 33L WITHOUT ATC AUTHORIZATION.
HS 21~24, 29	USE CAUTION OF CONFUSION ON TAXIWAYS. DO NOT PROCEED TAXIING BEYOND TRANSFER OF CONTROL POINTS WITHOUT CLEARANCE FROM INCHEON APRON OR GROUND(TOWER).
HS 25~28	USE CAUTION OF CONFUSION ON TAXIWAYS.

Note 1
All aeroplane will taxi at speeds of more than 10 kt on Taxiways A, B, C, D, M, N or P to ensure smooth traffic flow unless there is exceptional direction concerning safety factors by ATC. And if it is impracticable, pilots shall notify to ATC.

Note 2
When non-standard taxi routes are applicable, Incheon APRON will issue transition taxi instructions one to another taxilane in APRON 2, APRON 3, APRON 4 and Cargo APRONS.

CAUTION
For Gate 11 and 42, pilots needs to pay extra caution to follow the lead lines, which may require more than two turns.

APRON	SURFACE	WIDTH	STRENGTH
			PCN
Apron 1, 2 Cargo Apron 1 Maintenance Apron	Concrete	-	PCN 86/R/B/X/T
Apron 3, 4 Cargo Apron 2	Concrete	-	PCN 85/R/B/X/T
TWY A, D	Concrete	30 m Shoulder : 1.5 m - Paved : 12 m - Turfed : 3 m	PCN 86/R/B/X/T
TWY B, C	Asphalt	-	PCN 88/F/B/X/T
TWY M	Concrete	-	PCN 85/R/B/X/T
TWY N	Asphalt	30 m Shoulder : 1.5 m - Paved : 1.5 m	PCN 75/F/B/X/T
TWY P	Asphalt	-	PCN 75/F/B/X/T

Taxiway edge lights on all taxiways curve area
Taxiway center line lights on all taxiways
PAX Terminal and Concourse A VDGS equipped

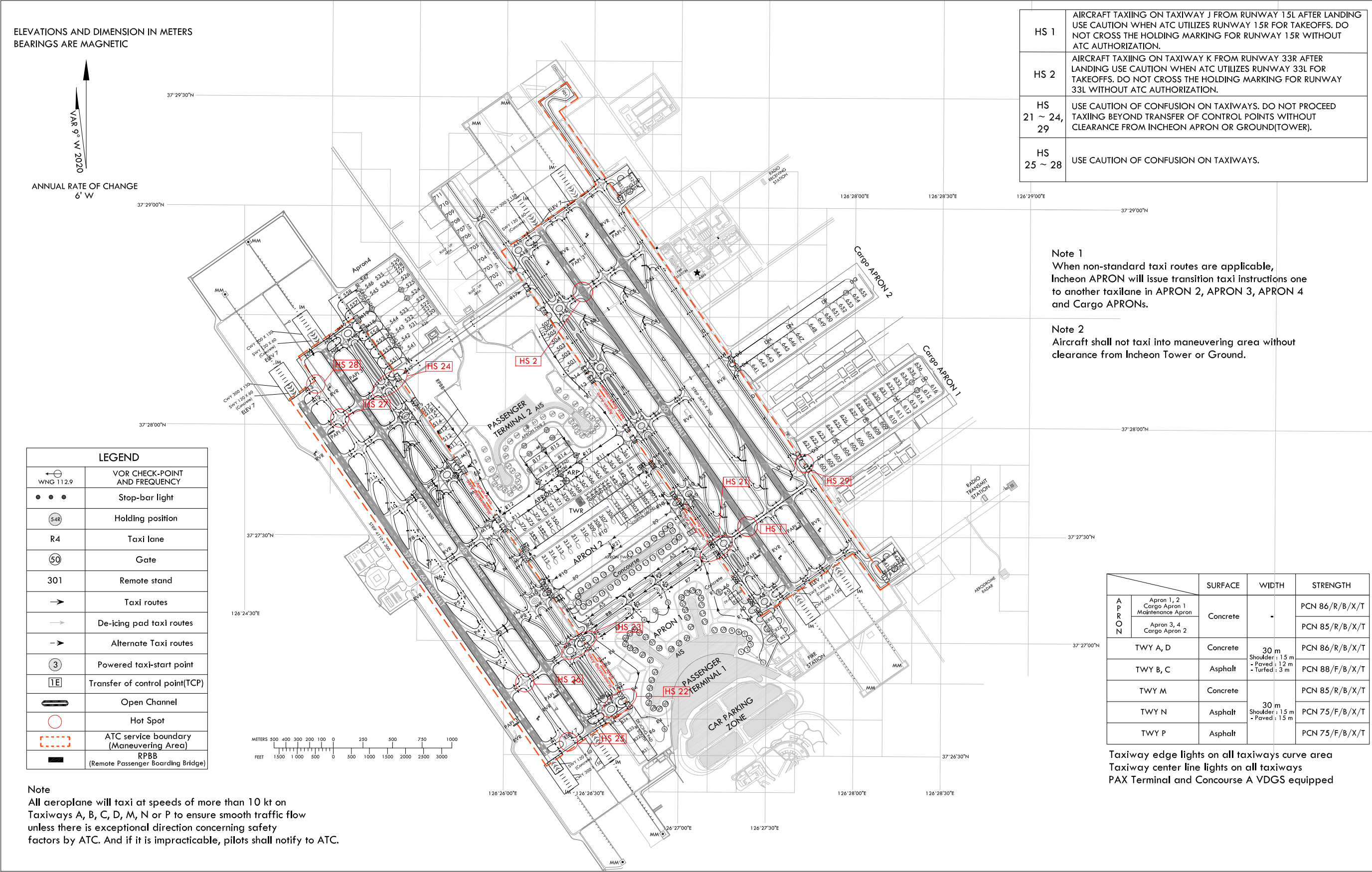
Change : Information of taxilane, ACFT stands, TCP, stop-bar lights, intermediate holding position lights, and de-icing pad marking.

AERODROME GROUND
MOVEMENT CHART - ICAO

APRON ELEV 6 m

TWR 118.2(E) 118.8(W)
GND 121.75(E) 121.7(W)
APRON 121.65 122.175 123.675
121.8 123.325

SEOUL / Incheon Intl
RWY 16L/R, 34L/R DEPARTURE



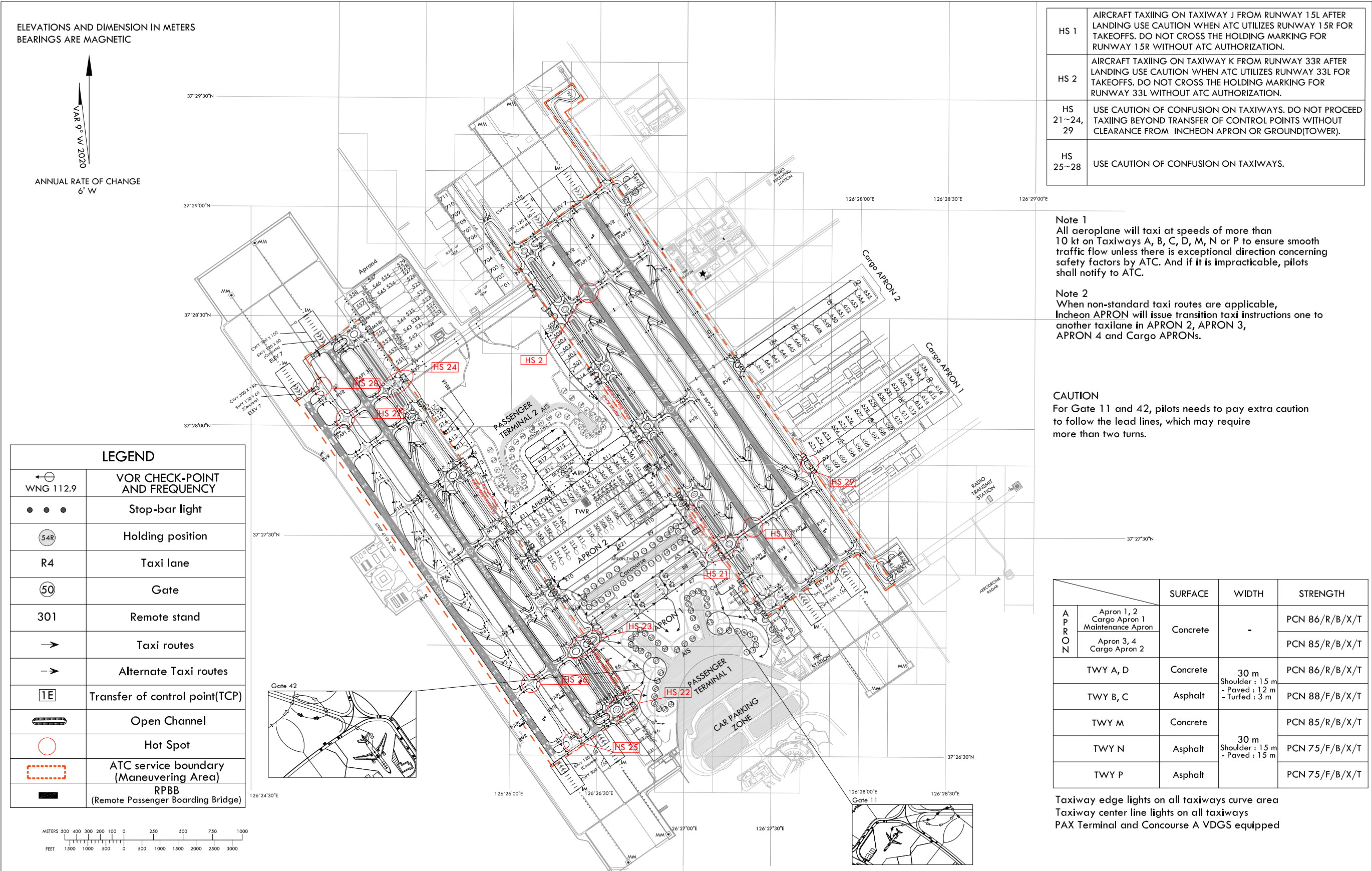
Change : Information of taxilane, ACFT stands, TCP, stop-bar lights, intermediate holding position lights, and de-icing pad marking.

AERODROME GROUND
MOVEMENT CHART - ICAO

APRON ELEV 6 m

TWR 118.2(E) 118.8(W)
GND 121.75(E) 121.7(W)
APRON 121.65 122.175 123.675
121.8 123.325

RKSI AD CHART 2 - 9
20 OCT 2022
SEOUL / Incheon Intl
RWY 16L/R, 34L/R ARRIVAL



Change : Information of taxilane, ACFT stands, TCP, stop-bar lights, intermediate holding position lights, and de-icing pad marking.